

AVTECH '15

III. AUTOMOTIVE AND VEHICLE TECHNOLOGIES CONFERENCE PROCEEDINGS

Özgür Öztürk **DAKAM YAYINLARI**
November 2015, İstanbul.

www.dakam.org

Firuzaga Mah. Boğazkesen Cad., Çangar İş Merkezi 36/ 2, 34425, Beyoğlu, İstanbul

AVTECH '15 / III. Automotive and Vehicle Technologies Conference Proceedings

November 23-24, 2015, İstanbul

organized by DAKAM (Eastern Mediterranean Academic Research Center)

Edited by: Barış Öztürk

Cover Design: D/GD (DAKAM Graphic Design)

Print: Metin Copy Plus

Mollafenari Mah., Türkocağı Cad. 3/1, Mahmutpaşa/İstanbul, Turkey

ISBN: 978-605-9207-10-6

LEANSHIP - DESIGN AND DEVELOPMENT OF A HIGH FIDELITY INTEGRATED SHIP MANAGEMENT SYSTEM FOR MATCHING ENGINE OPERATIONS TO SEA AND AIR CONDITIONS

REZA ZIARATI, BASAK YUCEL AKDEMIR

Reza Ziarati, Professor, C4FF, UK, Basak Yucel Akdemir, Dr, BAU, TR

Abstract

This paper reports on a project that aimed to regulate the navigational equipment and engine performance parameters for minimum fuel consumption and exhaust emissions by taking advantage of the wind and sea conditions ensuring also compliance with EEDI (Energy Efficiency Design Index) without the risk of intentional reduction of speed. The primary experiments have shown substantial fuel saving potential. To achieve this aim, key operating factors affecting the efficiency of ship operations were investigated and methodologies to optimise navigation and engine control systems, for safe operations and efficient performance, were developed. A set of high fidelity tools and processes for the accurate and efficient analysis of air and sea conditions were considered. The project included limited hydrodynamic analysis for ships' operational performance in normal running condition as well as slow speed behaviour. The project work concerned the adaptation of multi-objective optimisation and integrated design environments for holistic operational performance and minimum powering requirement predictions; this is expected to ensure safe application of the design rules guaranteeing, at the same time, the right balance between economic efficiency, environmental performance and safety. The main deliverable of this project was a decision support system to provide navigation knowledge to regulate engine running conditions for minimum fuel consumption and lowest feasible CO₂ emission. The project is on going and the overall system is expected to comprise a standalone platform composed of all hardware and software systems.

Introduction - Concept and approach

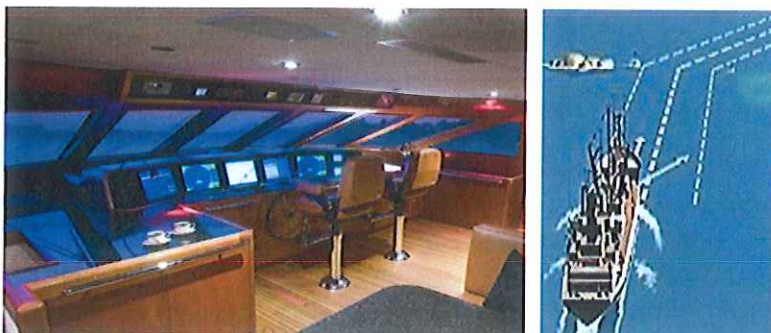
A review of recent publications (Lloyd's Register, Life Matters, June 2012) and the IMO's own reports (Marine Environmental Protection Committee (MEPC), 64 session, Agenda item 4, 29th June 2012) and similar reports by learnt societies and classification societies and maritime organisations, for instance, German Lloyd Academy (GL, EEDI in practice, 2012) which give a clear view of the roadmap for reducing the marine engine emissions in particular in the near future. The whole of Central and North America coastal areas are now

almost an ECA (Emission Control Area) and it is expected that coasts of Mexico, Alaska and the Great lakes, Singapore, Hong Kong, Korea, Australia, Black Sea, Mediterranean Sea and Tokyo bay are currently considering becoming ECAs. What is significant is that these constitute 90% of shipping routes so the implications are serious. The Lloyd's report (Life Matters, June 2012) contains a set of guidance notes to provide advice to owners, operators and shipyards who are perhaps looking to adopt the EEDI early on a voluntary basis, or prepare themselves for its future mandatory implementation. The guidance reflects the current status of the IMO regulations as well as providing information on what options are currently available for ensuring compliance. It is stated that the purpose of the EEDI is to provide a design index, primarily applicable to new ships, that has been developed by the International Maritime Organisation (IMO) and is to be used as a tool for control of CO2 emissions from ships. The IMO aims to improve the energy efficiency of ships via (future) mandatory implementation of the EEDI. IMO has developed a number of technical and operational measures that include: i) The Energy Efficiency Design Index (EEDI); ii) The Energy Efficiency Operational Index (EEOI) and iii) The Ship Energy Efficiency Management Plan (SEEMP). The IMO has also been working on a number of Market-Based Measures (MBMs) for the marine industry. The MBMs' development is still ongoing. It should be noted that the EEDI represents one of the major technical regulations for marine CO2 reduction. Each ship will require its own EEDI which will be verified by a recognised organisation (RO) as described further on in this document. Following verification, an International Energy Efficiency Certificate (IEEC) covering both EEDI and SEEMP will be issued by the RO on behalf of the Flag State and will be required to be maintained onboard the ship throughout its life. The certificate is valid for the life of the ship unless the ship undergoes major conversion, is withdrawn from service or transfers flag.

The ultimate aim of this project was to develop an intelligent ship management system (engine, navigation and transducers) – Figures 1 and 2 - which helps to reduce energy consumption and engine emissions to a minimum, whilst simultaneously considering the hydrodynamic characteristics and above all safety of the ship and its crew. It was also intended to develop a means of monitoring the emissions at ports by novel means as demonstrated by Figure 3 below. One of the partners (TRANSAS) has well-known knowledge of on-board navigation, simulation and Vessel Traffic Management Systems in marine sector (see for instance <https://www.youtube.com/watch?v=95rrRtGPmXw> - shall provide some navigation tools for the ships for optimisation of fuel consumption).

Figure 1. Proposed Ship AutoSet System Is Based on New Knowledge – Innovation Is New Knowledge and in System Integration

Ship AutoSet Systems



Data fusion from internal sources

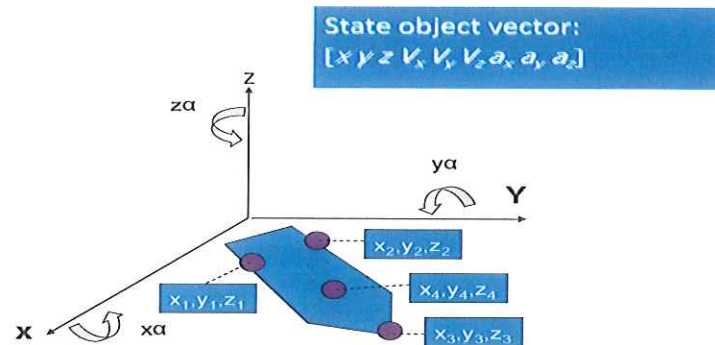


Figure 2. Navigation Automation – Novel Means of Changing Course

Example: Technology

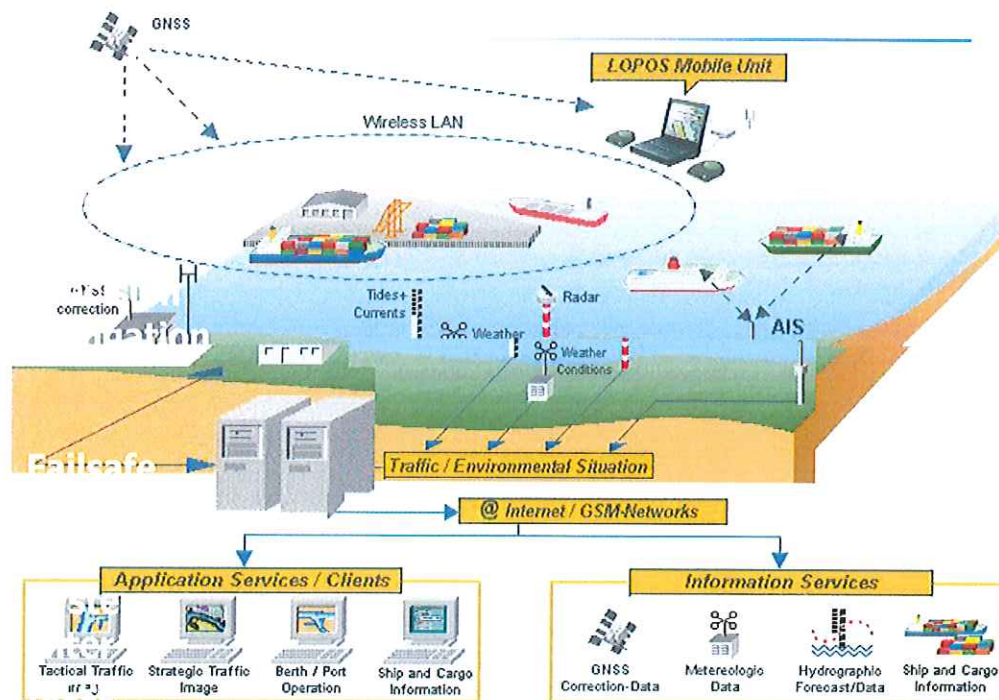


Figure 3. Ports as Controlled Zones Monitoring Arrival of EEDI and Non-EEDI Vessels

It was assumed that ship designers/builders will have to abide by the EEDI requirements and hence, as part of this project, the EEDI was used as one of the core equations for integration and fusion of data from various navigation and engine controls. It was also acknowledged that the project also used slow steaming when considered beneficial for saving fuel or reducing emissions such as CO₂. The advantages of slow steaming is documented in a report by Maersk Group, showing a reduction of bunker fuel use in 2007, dropping from 13.8 million tonnes to 10.7 million in 2010, which is reported to have saved 2 million tonnes of CO₂ and brought about a significant reduction of NO_x and SO_x levels. Slow steaming has already proven its merits worldwide, so much so that COSCO, K-Line, Yang Ming and Hanjin are already applying slow steaming throughout their fleets with the result of considerable energy savings and reduced emissions. The latest report from Maersk is that emissions reduced by 36.44% in 2007, 38% in 2008 and 42.67% in 2009 as a result of applying slow steaming, although the details of what these figures really mean and where the base lines lie are not yet clear as there is no mention of losses due to slowing down the engines and increasing journey times.

However, considering a surplus of ships, due to the current economic crisis, the decision to slow down the ships may not be a major issue now but will be an issue in the future when business is expected to pick up. It is also true that slow steaming can mean a drive to cutting energy consumption through optimal hull designs, waste heat recovery systems, use of wind power wherever and whenever feasible or solar power. The earlier research by Ziarati in 1970s and 1980s (Ziarati, 1987) and subsequent papers in (see for example http://www.c4ff.co.uk/history/papers/AutoTech_95_paper.pdf) using variable geometry and high pressure fuel injection systems, reduced engine heat losses and shown that lighter engines and engine components can considerably reduce CO₂. Mert et al., 2002) also provides a means of better management of propulsion system on board vessels is an important consideration in reducing fuel consumptions with lower engine emissions. One significant area is an improved matching of turbochargers with the engines. While his engine designs are used worldwide, and his laboratory in Bath University is reported to have been supported by almost all oil majors and engine and engine component manufacturers, he believes there is a long way to go to make diesel engines consume less oil and produce reduced amount of pollutants. He is also of the view that fuel types make a difference and that lower Sulphur fuels often produce lesser CO₂, NO_x and of course, SO_x. The emergence of novel catalysts has shown that some harmful diesel particulates also be effectively removed.

As a result of a project with Lloyd's Register, funded through an EU non-nuclear initiative, Ziarati (1995) produced the UK's first revolutionary hybrid engine for cars and trucks using dual power systems. The work led to development of engine 'finger printing' that would be an easier means of monitoring a ship's engine efficiency and exhaust emissions. The findings from these pieces of research were built into the intended set of tools, which are expected to be developed as result of this proposed programme of research and development (Ziarati, 1990 and, Ozkaynak, S., Ziarati, R., and Bilgili, E., 2009).

This was a near market project. The intention was to test and evaluate a set of tools and validate a new knowledge in the form of new ship management system. This project comprised several key tasks:

Technological outcomes

1. A tested tool for monitoring sea surface condition.

2. A tested and refined tool for ship hull stress concentration and possible navigational movements to relieve pressure.
3. A tested and refined tool to estimate ship hull resistance, specifically wave-making resistance in order to support the work done by IACS for IMO regarding minimum power requirements.
4. A tested tool for engine management and control.
5. A tested tool for coordinated navigation guidance and control.
6. A new tool, known as the AutoSet, introducing new knowledge for engine management and take the output from tools 1 to 5 above to provide a decision support for consideration by the crew. The new knowledge includes the latest and sophisticated neural network (Ziarati, 2013).

Business outcomes

The business tasks was to reduce the cost of operating ships (test results leading to a saving of 150,000 EUR per ship per year for 50 KTon tanker) by reducing fuel consumption (275 MTon of Fuel per ship per year) and emissions (220 Ton per ship per year) and ensuring no compromise with power requirements (EEDI, etc) for safe shipping. This was achieved (Norra, 2013).

The Socio-Economical and Environmental

The tasks was to substantially reduce marine engine exhaust emissions (by around 275 MTon/per year for a 50 KTon Tanker), which was expected to revolutionise shipping as did the Clean Diesel project (Ozkaynak, S., Ziarati, R. and Bilgili. E., 2009), developed by two of the partners, which revolutionised the use of diesel engines worldwide in all transportation sectors.

Work Package Diagrams – AutoSet System and data flow diagram

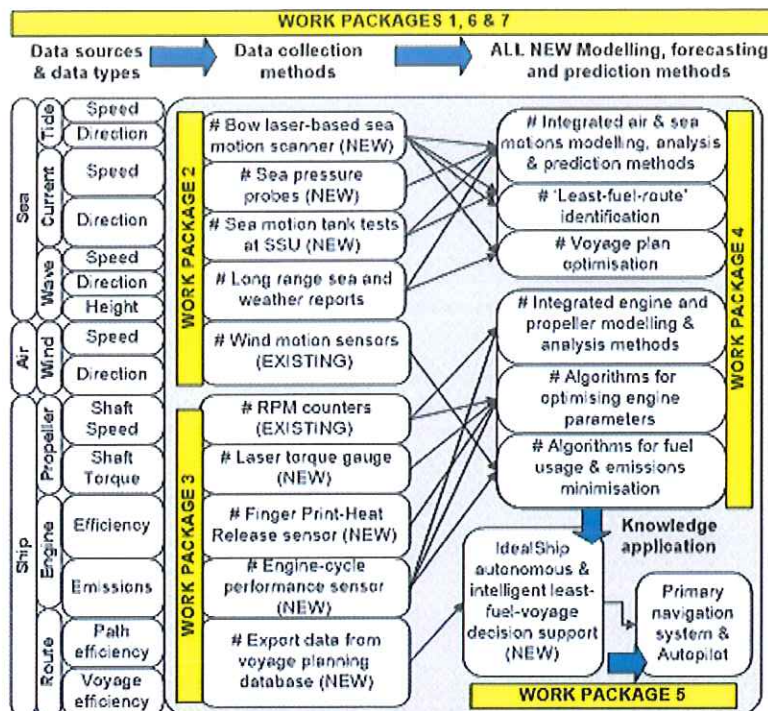


Figure 4. AutoSet System and data flow diagram

Technical Innovation

Technical innovation was also significant and pushes the boundaries over and beyond current leading-edge fuel and emissions reduction technology by its first time use of A&I systems to provide autonomous control of novel sensors, modelling and analysis functionality and intelligent decision-support systems. In this respect the autonomous processes developed within this project made use of the work of Schlitt and Brazma (2007). Through experience, gained by the C4FF team through 2 previous UK Government TSB CRD projects, that involved use of autonomous control techniques within operations planning, this biological modelling approach was adapted for use in fuel and emissions reduction through improved navigation and engine control. In this respect the innovative sensor data-collection, autonomous control and artificial intelligence modelling and analysis technologies developed were able to identify alternative direction changes and from these select those that contribute most to minimising the amount of fuel used during a vessel's entire voyage, i.e. selected paths when accumulated achieved least-fuel-voyages (L-F-V). Autonomous control systems enabled fast responses to the high levels of sea and air condition variability that enabled synchronisation of engine management with such changes. Innovative Artificial Neural Network (ANN) based advanced modelling and analysis functionality was used involving adapting existing ANN network structures, and using data collected from sensing devices to directly train ANNs and test their accuracy and reliability with which least-fuel-voyages system identified and followed. There are no existing systems capable of this level of technical innovation and it represents a significant step in the management of fuel usage in the maritime sector but also with potential in other transport sectors particularly rail. The following are some related EU funded projects.

Conclusion

There is no dispute that an intelligent integration of ship navigation and engine controls for accurate and efficient analysis of safety and performance sensitive hydrodynamic problems in normal and extreme sea and air operational conditions, including intact stability performance would help realise the ultimate aim of **improving the efficiency of waterborne transports** by the reduction of ship emissions through energy systems' integration. The intention was continuous assessment and minimisation of the risks. Risk awareness and management will play a major role in developing the intended tools and system measurements and their integration. The project further strengthened the competitiveness by focusing on innovative vessel designs and automatic manufacturing techniques. The research also contributed to cross-thematic marine and maritime research ("The Ocean of Tomorrow 2013") and the Commission's 'Marine Knowledge 2020.' The results of the project contributed to enhancing the safety of vessels in compromised situations, while respecting regulatory environmental constraints. The results also contributed to the strengthening of technical knowledge as inputs to negotiations at IMO committee meetings (Sahayam, 2013).

Safety is a critical success factor for shipping companies that want to survive; this means that, whatever benefits a new tool brings, safety should not be compromised. The second factor was and still is the IMO and its requirements. These have to be respected, even if some requirements have not been fully tested. The IMO's recently introduced new standards related to energy efficiency in particular the EEDI is not as clearly understood as it first appears. A careful review of the EEDI clearly shows that the formula used to arrive at the Index is more rigid than first appears. The formula itself has not been fully tested, but EEDI signals the introduction of emission controls at sea and there are more regulations to come. The mid-eighties brought the beginning of the end for many engine designers as the EU started discussing future emissions levels for several pollutants such as CO₂, NO_x and so forth, yet failed to limit the unacceptable levels of particulates from combustion of diesel fuels responsible for many cancer cases. Nevertheless, the imposition of emission levels brought new ways of designing and producing trucks/cars and this process is continuing. The same is expected for the shipping industry. If the shipping industry fails to regulate itself, EU or USA and some others will take the lead. This is already happening with the introduction of the North America Emission control.

The most important message to the countries who manufacture diesel engines is for them to realise there are ways of burning NO_xs and in fact C4FF has experimented with several new engines burning NO_xs as fuel so there is no reason for these harmful by-products of diesel combustion not to be burnt as part of the exhaust gas recirculation. Furthermore, the Governments are aware that the harmful particulates of Diesel can be filtered or transformed by special catalyst. C4FF is of the view that diesel engines should be modified to burn gas as is the case with some of gas engines developed by C4FF. In the marine world, Wartsila have already reconfigured two of the diesel engines into gas engines with a great deal of success. The future is hybrids with gas as the main source of engine fuel.

References

- NB: This project is an industrial project and was initiated based on the work of Reza Ziarati (1975-2009).
- Ziarati, R., 1987. An Investigation into Fuel Injection Equipment & Combustion Performance of Medium Size Diesel Engines, IMechE Symposium, London, November 1987.
- Ziarati, R., 1990. Mathematical Modelling and Computer Simulation of Medium Size Diesel Engine, COMODIA 90 - Paper No.47, September 1990, Kyoto, Japan.

Ziarati, R., 1995. Emerging Transport Systems", IRTE, Scottish National Lecture and Exhibition, SECC, Glasgow. Journal of Transport Engineers, November 1995. Awarded the Mackenzie Junner Technical by IRTE, for Best Annual Lecture and the IRTE National Diploma for Best Paper, 1996.

Mert, A., Ozkaynak, S., Ziarati, R., Ozkaynak, Su., and Kucuk, H., 2009. **Design and Development of a Computer Controlled Marine Diesel Engine Facility for Maritime Engineering Research and Training'**, IMLA 2009, Ghana, 2009.

Schlitt, T. and Brazma, A., 2007. Current approaches to gene regulatory network modelling", BMC Bioinformatics B (Supplement 6):59, pp 1 to 22.

Ozkaynak, S., Ziarati, Z., Bilgili, E., 2009. Design and development of a diesel engine computer, simulation program, 13th Congress of Intl. Maritime Assoc. of Mediterranean, IMAM 2009, Istanbul, Turkey, 12-15 October 2009.

Ziarati, et al., 2013. Design and Development of An Emulated Human Cognition Using Novel 3D Neural Networks, ICMR 2013.

Sahayam , N. B. V., 2013. C4FF 'S LeanShip Report, C4FF Report, 2013, based on Ziarati, R., Ziarati, M., and Koivisto, H., Ideal Ship – Proposal to develop the next generation of ship command structures. International Association of Maritime Universities (IAMU), IAMU 2013.

Sahayam , N. B. V., 2014. Strategic Analysis of C4FF 'S LeanShip, Masters Internship Report, MBA International Business (2013-2014), Coventry University , 2014